



KI-LAT KRABANG CO.LTD



# GLOBAL NETWORK OF KI GROUP





# HISTORY OF KI GROUP 85 YEARS

★ **Mar 1934** : Established Keiaisha in Japan

**Jul 1980** : Takeover Asama Sunday House Co.,Ltd.

**Jul 1981** : Takeover Nippon Agency Co.,Ltd.

★ **Nov 1988** : Established KI (USA) Corporation in USA

**Jun 1989** : Merged with NMB Co.,Ltd. & Changed company name to Keiaisha NMB Co.,Ltd.

**Nov 1998** : Purchased Ikeda Metals Co.,Ltd.

**Jan 2001** : NMB division was transferred to Minebea Co.,Ltd.  
& Changed company name to Keiaisha Co.,Ltd.

**Jul 2004** : Take over Keiaisha Seisakusho Co.,Ltd.

★ **Mar 2010** : Established Keiaisha (Thailand) Co.,Ltd. in Thailand

★ **Aug 2011** : Established a Representative Office in Cambodia

**May 2013** : Launched “Restaurant Tokyo” in Cambodia

★ **Dec 2013** : Established KI-Ecotech Co.,Ltd. in Thailand

**Mar 2014** : 80 years anniversary

★ **Jan 2015** : Established Keiaisha MEX in Mexico

★ **Dec 2015** : Established KI-Lat Krabang Co., Ltd. in Thailand

★ **Apr 2016** : Business Transfer from Lardkrabang Steel and Tools & Die Co., Ltd to KI-Lat Krabang Co., Ltd.

★ **Jul 2016** : KI-Lat Krabang started the operations in Thailand



# KI BUSINESSES

## Metal Scrap



- Manufacture
- Sale of steel
- Demolition service

## Automotive Part



- Manufacture
- Sale of auto part

## Automotive Recycling



- Demolition of used vehicle
- Sale of second hand parts

## Aluminum Recycling



- Manufacture
- Sale of recycled aluminum alloys

## Related Business



- Sale of steel materials, machine, tools, oils etc.
- Auto leasing
- Insurance
- Restaurant



## MANAGEMENT POLICY

**“Do our best based on safety and quality to make and supply the product that customers are always satisfied”**

- Completeness of visual management.
- Enforcement of the improvement activity based on the productivity data.
- Reinforcement of the administrative task by the introduction of the cost management system and production control system.
- Transfer from the stamping parts to welding assembly parts.
- By the Introduction of the automatic machines, enforcement of high quality and high performance.



# COMPANY PROFILE OF KI-LATKRABANG

\* Dec 2015 : Established KI-Lat Krabang in Thailand as 100% subsidiary of KEIAISHA(Japan) CO., LTD.

- Registered Capital : 3,000,000 THB
- Capital increase : 8,000,000 THB (May 2016)
- Capital increase : 160,000,000 THB (June 2016)
- Capital increase : 260,000,000 THB (March 2018)

\* Apr 2016 : Business Transfer from LBS & LTD to KI-Lat Krabang

\* Jul 2016 : KI-Lat Krabang started the operations

\* Business : ▪ Metal Stamping & Welding Assembly of Automotive parts and Electric parts

- Die making and Sale

\* **IATF16949 & ISO9001:2015**

\* Employee ( Lasted update July 2019)

- Management 20 persons
- Supervisory level 55 persons
- Assisting Supervisory level 45 persons
- Operational 121 persons

**Total Employee 241 persons**

**(Include Japanese 5 persons)**

\* Address

864, Luangpaeng Road, Thapyao Sub-district, Bangkok THAILAND 10520

TEL : +66(0) 2 7380 1705

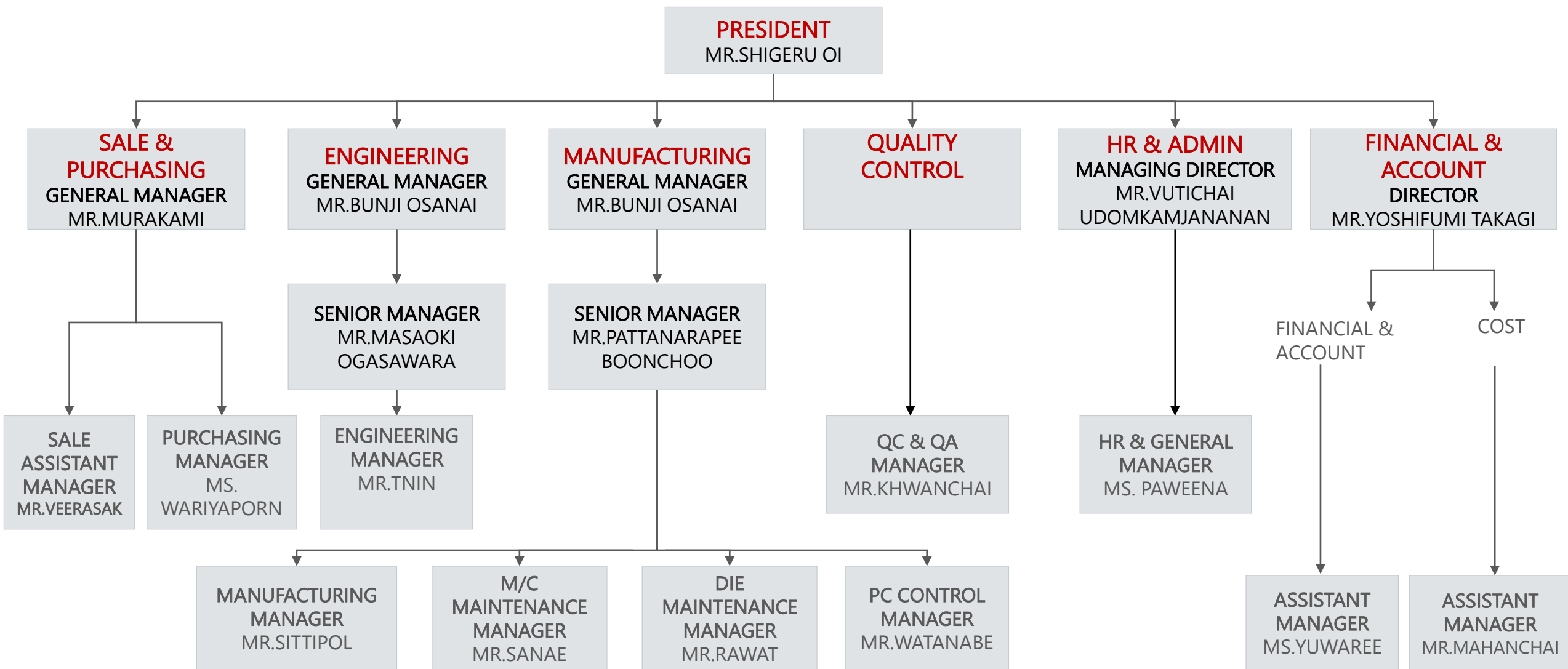
fax : +66(0) 2 738-1834

TAX ID : 0105558195001





# KI-LATKRABANG ORGANIZATION

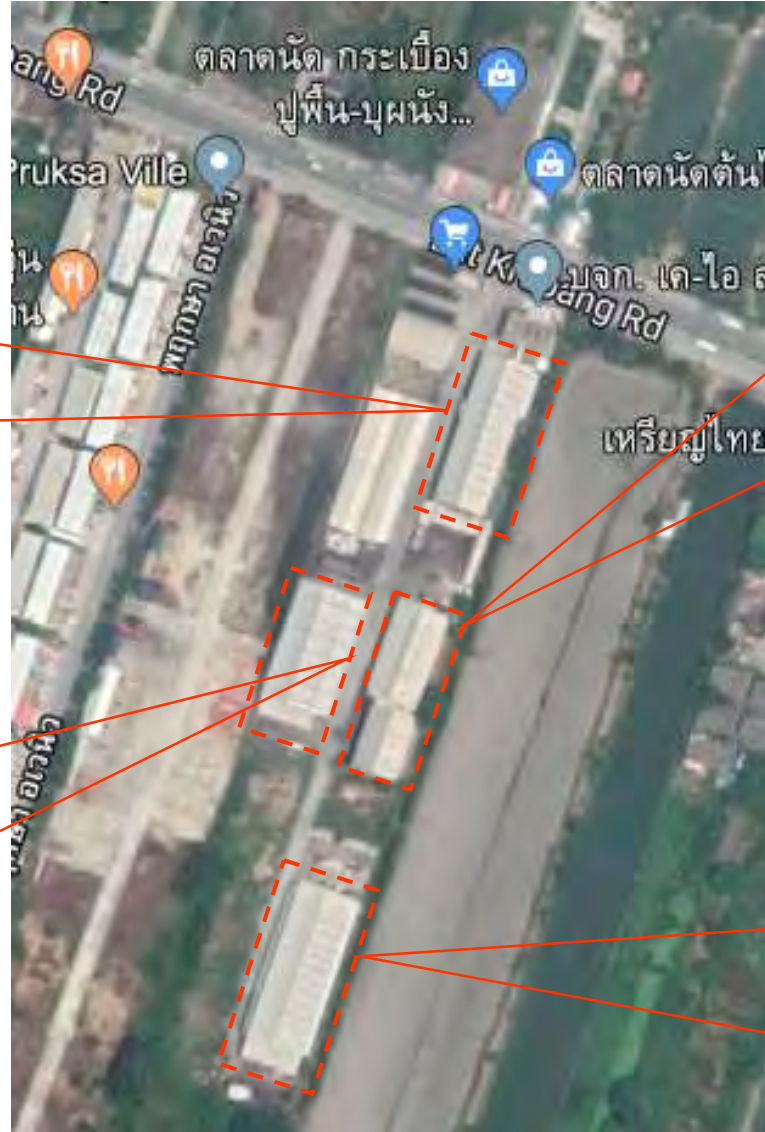


# FACTORY LAYOUT

**Building\_1**



**Building\_4**



**Building\_2**



**Building\_3**



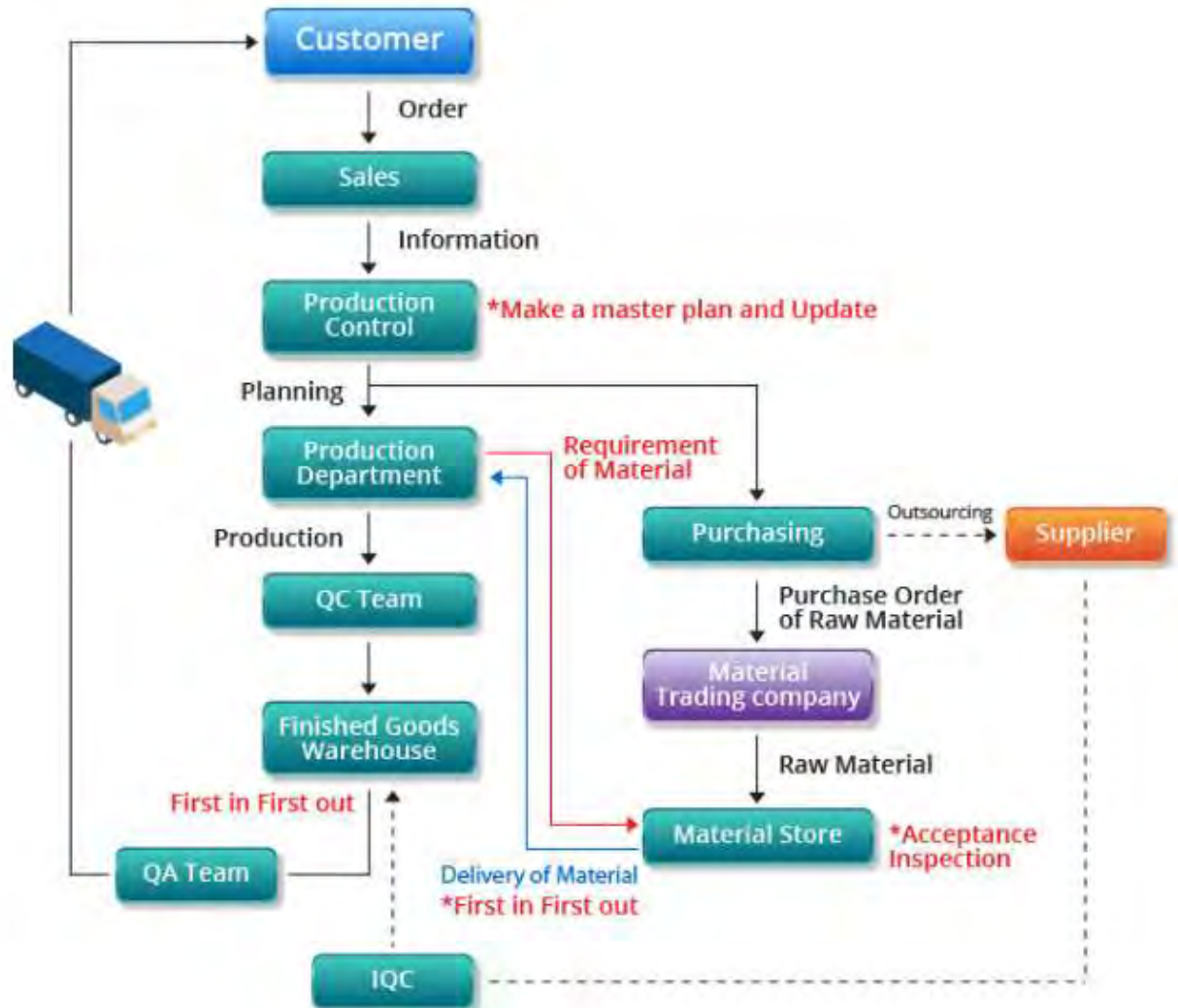


# OUR MAIN CUSTOMERS

## Automotive Parts



# PROCESS CHART OF PRODUCTION



	Detail
Quality Management System	ISO 9001 (Acquisition of License : 24/Oct/2006) TS16949 (Acquisition of License : 16/Aug/2010)
Introduced System	Production Control System ... VOSK (Japan version) <ul style="list-style-type: none"> <li>· Production management</li> <li>· Inventory management</li> <li>· Purchase management</li> <li>· Cost management</li> <li>· Sales management</li> </ul> Financial and Accounting System ... Winspeed <ul style="list-style-type: none"> <li>· Financial &amp; Accounting management</li> <li>· Inventory of Raw Material management</li> </ul>



# MACHINE LIST

## TANDEM PRESS

■ <100 tons	6 units
■ 100 tons	5 units
■ 110 tons	14 units
■ 150 tons	8 units
■ 160 tons	2 units
■ 200 tons	8 units
■ 250 tons	11 units
■ 300 tons	3 units
■ 400 tons	3 units
■ 500 tons	2 units
■ 600 tons	1 unit
Total	63 units

## PROGRESSIVE PRESS

■ 110 tons	1 unit
■ 150 tons	1 unit
■ 300 tons	1 unit
■ 500 tons	1 unit
■ 600 tons	2 units
Total	6 units

## WELDIND MACHINES

- SPOT & PROJECTION WELDING
  - 25Kva 1 unit
  - 50Kva 8 units
- CO2 WELDING ( Manual )
  - 12.3Kw 4 units
  - 16.2Kw 1 unit

## NEW MACHINES

- A/W ROBOT CO2
  - Panasonic 1 unit
- WASHIING MACHINE
  - 1 unit



# TANDEM LINES





# PROGRESSIVE LINES





# NEW PRESS LINE

## 400-600 tons





## SAMPLE OF OUR PRODUCTS (AUTOMOTIVE PARTS)



**COVER COM T/C**  
**SOP NOW..!!**



# SAMPLE OF OUR PRODUCTS (AUTOMOTIVE PARTS)



**Pedal & Hand Brake Parts**

**(High Tensile Materials)**





# SAMPLE OF OUR PRODUCTS (AUTOMOTIVE PARTS)



**Muffler & Exhaust Parts**



# SAMPLE OF OUR PRODUCTS (AUTOMOTIVE PARTS)





# MACHINE LIST FOR DIE MAKING

## Machine Facilities

- Machining Centers            3 units
- CNC Wire Cut                3 units
- Milling & Grinding            14 units

( Makino/Haas/Mitsubishi/Okamoto/Agie)



# CNC MACHINES

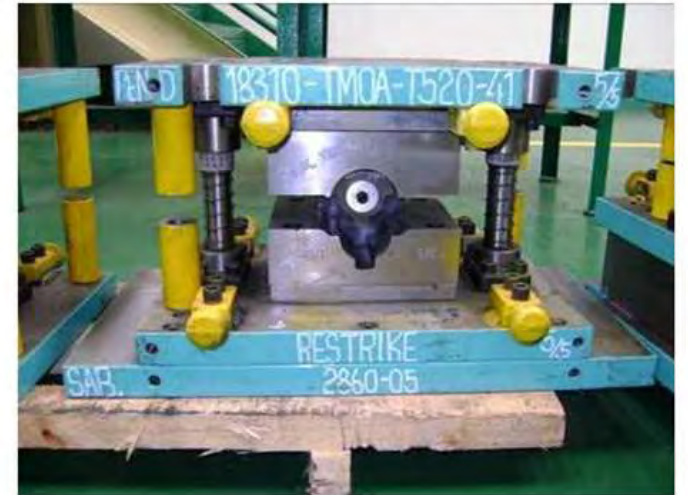
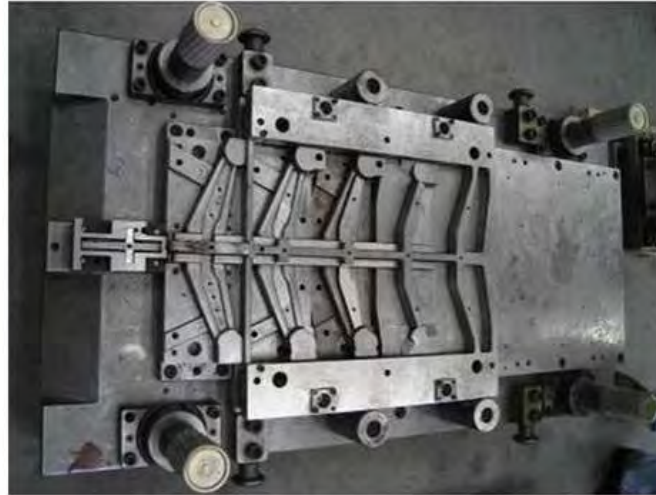




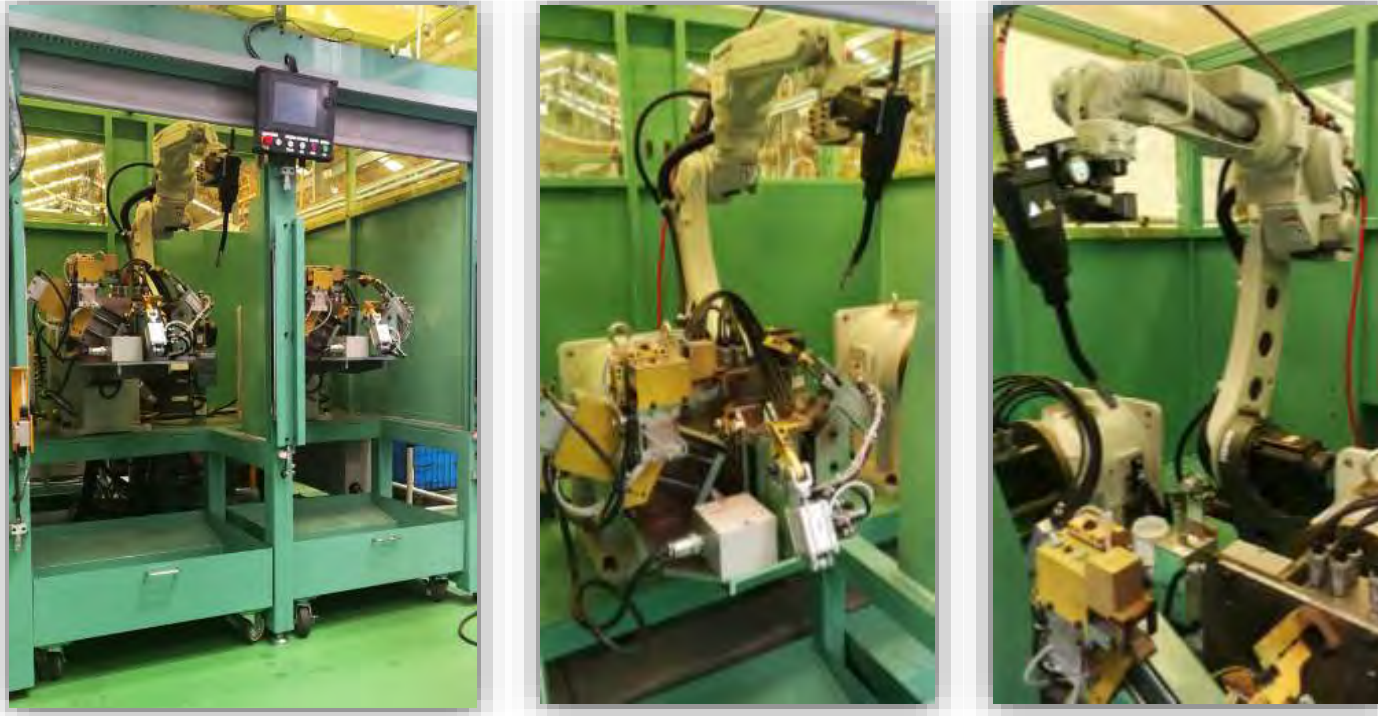
# WIRED CUT MACHINES



# DIE SAMPLES



# PRODUCTION WELDING ASSEMBLY PARTS



- Transfer from the stamping parts to welding assembly parts
- Enforcement of high quality and high performance by the Introduction of the welding robots.
- Introduction of KI-Japan technology



# BUSINESS THAT WILL SPREAD IN THE FUTURE







# COMPANY LOCATION





**Thank  
you**